

MISTER SUN

Traditional American Song

With an easy swing

Oh, Mis - ter Sun, Sun, Mis - ter Gold - en Sun,

Please shine down on me. Oh, Mis - ter Sun, Sun,

Mis - ter Gold - en Sun, Hid - ing be - hind a tree.

These lit - tle chil - dren are ask - ing you To

please come out so we can play with you. Oh, Mis - ter Sun, Sun,

Mis - ter Gold - en Sun, Please shine down on me.

Autoharp, banjo strum
Piano, accompaniment pattern XVI

* Perform this song three times. The first two times, perform the melody as written. The last time, sing the second-to-last measure three times before going on to the final measure. Invent a pantomime to depict the song's words, such as "sun" and "hiding."

THIS LAND IS YOUR LAND

Words and music by Woody Guthrie
(United States, 1912-1967)

Verse

(E) A E

1. As I was walk - ing that rib - bon of high - way, _____
 2. I've roamed and rambl - ed and I fol - lowed my foot - steps _____
 3. When the sun came shin - ing, and I was strol - ling, _____

B7 E

I saw a - bove me that end - less sky - way, _____
 To the spark - ling sands of her dia - mond des - erts, _____
 And the wheat fields wav - ing, and the dust clouds rol - ling, _____

A E

I saw be - low me that gold - en val - ley, _____
 And all a - round me a voice came sound - ing, _____
 As the fog was lift - ing a voice was chant - ing, _____

B7 E

This land was made for you and me. _____

Refrain

A E

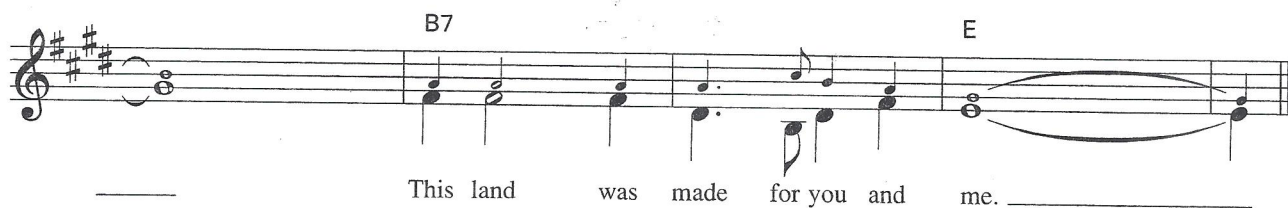
This land is your land, this land is my land, _____

B7 E

From Cal - i - for - nia to the New York is - land, _____

A E

From the red - wood for - est to the Gulf Stream wa - ters; _____



TRO-©-Copyright 1956 (Renewed) 1958 (Renewed) 1970 Ludlow Music, Inc.
New York, New York. Used by Permission.

Guitar, strum 20

4. ^EIn the ^Asquare of the ^Ecity in the shadow of the ^Esteeple,
^{B7}By the ^ERelief Office I seen my people;
^AAs they stood there hungry, I stood there ^Ewondering if,
^{B7}This land was made for you and me. (*Refrain*)
5. ^EAs I went walking, that ^Adirty ^Eold highway,
^{B7}I saw a sign that read private ^Eproperty,
^ABut on the ^Eother side it didn't say nothing,
^{B7}That side was made for you and me. (*Refrain*)
6. ^ENobody living can ever stop me,
^{B7}As I go walking that ^Efreedom highway;
^ANobody living can make me ^Eturn back,
^{B7}This land was made for you and me. (*Refrain*)

Woodrow Wilson Guthrie, American folk singer, guitarist, and composer of ballads, was born in Okemah, Oklahoma, on July 14, 1912. By the age of 13, he was earning his living as a wandering singer, performing in saloons, migrant labor camps, and "hobo jungles" (where the homeless men of the 1930s camped). Later he composed ballads, performed on radio, and wrote a newspaper column. His songs are filled with stories of how ordinary people became victims of the 1930s depression. He also celebrates the great beauty of the American landscape in songs such as "This Land Is Your Land," one of his nearly one thousand songs. Woody's son Arlo Guthrie (born 1947) is also a songwriter, composing "Alice's Restaurant" and starring in the 1969 film of the same name. Woody influenced many singers and songwriters, including Bob Dylan. After a long battle with Huntington's disease, Woody died in 1967 in New York City.

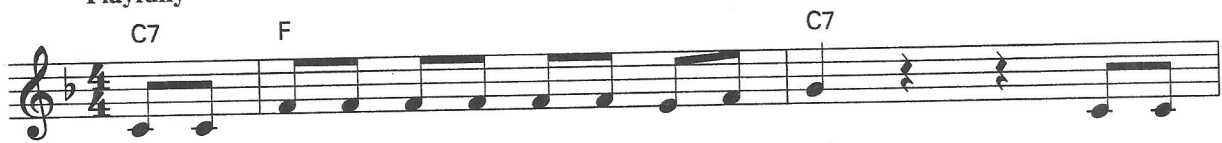


Woody Guthrie

IF YOU'RE HAPPY

Traditional American Song

Playfully



If you're hap - py and you know it, { 1. clap your hands, } If you're
 { 2. tap your toe, }
 { 3. nod your head, }
 { 4. do all three, }



hap - py and you know it, { clap your hands, } If you're hap - py and you know it, then your
 { tap your toe, }
 { nod your head, }
 { do all three, }



face will sure - ly show it, If you're hap - py and you know it, { clap your hands, (clap, clap)
 { tap your toe. (tap, tap)
 { nod your head. (nod, nod)
 { do all three. (at once)

Autoharp, strum N

DOWN BY THE BAY

American Folk Song

Down by the bay, where the wa-ter-me-lons grow,

Back to my home I dare not go, For if I

do my moth-er will say,

1. "Did you ev-er see a goose —
2. "Did you ev-er see a whale with a
3. "Did you ev-er see a fly —
4. "Did you ev-er see a bear —
5. "Did you ev-er see — lla-mas —
6. "Did you ev-er have a time when you

kiss - ing a moose,
pol - ka dot — tail,
wear - ing a tie,
comb - ing his hair,
eat - ing their pa-ja-mas,
could-n't make a rhyme,

Down by the bay?" Down by the bay."

Piano, accompaniment pattern XVI

50x

Divide into two groups and sing "Down by the Bay" as an echo song. After group 1 sings "down by the bay," group 2 begins.

THIS LITTLE LIGHT OF MINE

African American Spiritual

With a swing

1. This lit - tle light of mine, } I'm gon - na let it shine,
2. Ev' - ry - where I go, }

This lit - tle light of mine, } I'm gon - na let it shine.
Ev' - ry - where I go, }

(B) (Em)

This lit - tle light of mine, } I'm gon - na let it shine, Let it
Ev' - ry - where I go, }

shine, let it shine, let it shine. _____

Autoharp, strum N

Piano, accompaniment pattern XVI