

# MISTER SUN

Traditional American Song

With an easy swing

Oh, Mis - ter Sun, Sun, Mis - ter Gold - en Sun,

Please shine down on me. Oh, Mis - ter Sun, Sun,

Mis - ter Gold - en Sun, Hid - ing be - hind a tree.

These lit - tle chil - dren are ask - ing you To

please come out so we can play with you. Oh, Mis - ter Sun, Sun,

Mis - ter Gold - en Sun, Please shine down on me.

**Autoharp, banjo strum**  
**Piano, accompaniment pattern XVI**

\* Perform this song three times. The first two times, perform the melody as written. The last time, sing the second-to-last measure three times before going on to the final measure. Invent a pantomime to depict the song's words, such as "sun" and "hiding."

# SHE'LL BE COMIN' 'ROUND THE MOUNTAIN

Southern Mountain Song

1. She'll be com - in' 'round the moun - tain when she comes, (toot

toot) She'll be com - in' 'round the moun - tain when she comes, (toot

toot) She'll be com - in' 'round the moun - tain, she'll be com - in' 'round the

moun - tain, She'll be com - in' 'round the moun - tain when she comes. (toot toot)

**Autoharp, strum C**

**Piano, accompaniment pattern IV**

2. She'll be driving six white horses  
when she comes . . . (whoa back, toot, toot)
3. Oh, we'll all go out to meet her,  
when she comes . . . (hi there, whoa back, toot, toot)
4. Oh, we'll all have chicken and dumplings  
when the she comes . . . (yum, yum, hi there, whoa back, toot, toot)
5. She will have to sleep with Grandma  
when she comes (*snoring sound*, yum, yum, hi there, whoa back, toot, toot)

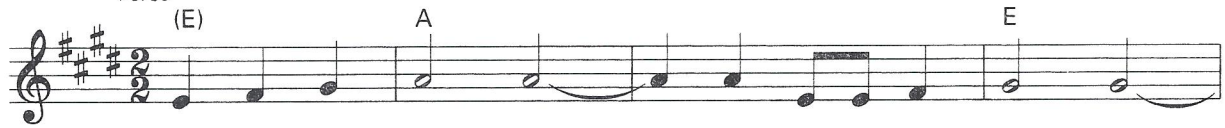
Perform appropriate sounds (with actions) during the rests in the melody. (See verse 1.)

At the end of each verse, repeat the sounds and actions of previous verses in reverse order.

# THIS LAND IS YOUR LAND

Words and music by Woody Guthrie  
(United States, 1912-1967)

Verse



1. As I was walk - ing \_\_\_\_\_ that rib - bon of high - way, \_\_\_\_\_
2. I've roamed and rambl - ed \_\_\_\_\_ and I fol - lowed my foot - steps \_\_\_\_\_
3. When the sun came shin - ing, \_\_\_\_\_ and I \_\_\_\_\_ was strol - ling, \_\_\_\_\_



\_\_\_\_\_ I saw a - bove me \_\_\_\_\_ that end - less sky - way, \_\_\_\_\_  
 \_\_\_\_\_ To the spark - ling sands of \_\_\_\_\_ her dia - mond des - erts, \_\_\_\_\_  
 \_\_\_\_\_ And the wheat fields wav - ing, \_\_\_\_\_ and the dust clouds rol - ling, \_\_\_\_\_

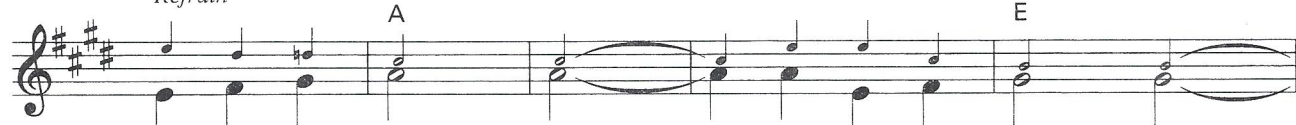


\_\_\_\_\_ I saw be - low me \_\_\_\_\_ that gold - en val - ley, \_\_\_\_\_  
 \_\_\_\_\_ And all a - round me \_\_\_\_\_ a voice came sound - ing, \_\_\_\_\_  
 \_\_\_\_\_ As the fog was lift - ing \_\_\_\_\_ a voice was chant - ing, \_\_\_\_\_



\_\_\_\_\_ } This land was made for you and me. \_\_\_\_\_

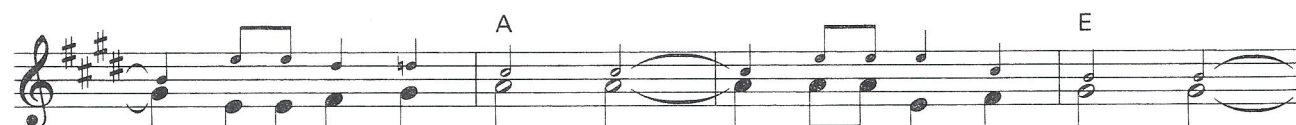
Refrain



This land is your land, \_\_\_\_\_ this land is my land, \_\_\_\_\_

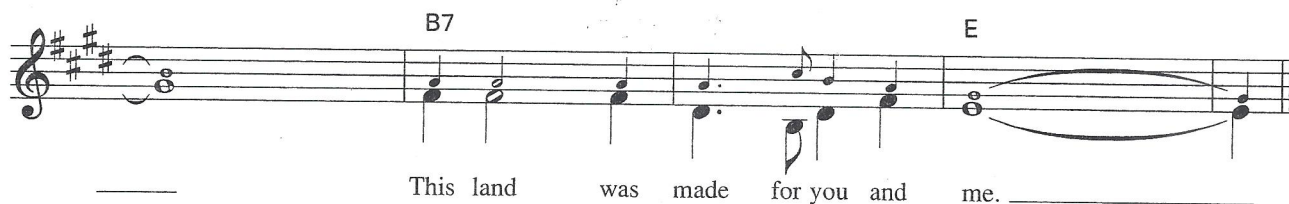


\_\_\_\_\_ From Cal - i - for - nia \_\_\_\_\_ to the New York is - land, \_\_\_\_\_



\_\_\_\_\_ From the red - wood for - est \_\_\_\_\_ to the Gulf Stream wa - ters; \_\_\_\_\_





TRO-©-Copyright 1956 (Renewed) 1958 (Renewed) 1970 Ludlow Music, Inc.  
New York, New York. Used by Permission.

### Guitar, strum 20

4. <sup>E</sup>In the <sup>A</sup>square of the <sup>E</sup>city in the shadow of the steeple,  
<sup>B7</sup>By the Relief Office I <sup>E</sup>seen my people;  
<sup>A</sup>As they stood there hungry, I stood there <sup>E</sup>wondering if,  
<sup>B7</sup>This land was made for you and me. (Refrain)
5. <sup>E</sup>As I went walking, that <sup>A</sup>dirty old highway,  
<sup>B7</sup>I saw a sign that read private <sup>E</sup>property,  
<sup>A</sup>But on the other side it <sup>E</sup>didn't say nothing,  
<sup>B7</sup>That side was made for you and me. (Refrain)
6. <sup>E</sup>Nobody living can ever stop me,  
<sup>B7</sup>As I go walking that <sup>E</sup>freedom highway;  
<sup>A</sup>Nobody living can make me <sup>E</sup>turn back,  
<sup>B7</sup>This land was made for you and me. (Refrain)

Woodrow Wilson Guthrie, American folk singer, guitarist, and composer of ballads, was born in Okemah, Oklahoma, on July 14, 1912. By the age of 13, he was earning his living as a wandering singer, performing in saloons, migrant labor camps, and "hobo jungles" (where the homeless men of the 1930s camped). Later he composed ballads, performed on radio, and wrote a newspaper column. His songs are filled with stories of how ordinary people became victims of the 1930s depression. He also celebrates the great beauty of the American landscape in songs such as "This Land Is Your Land," one of his nearly one thousand songs. Woody's son Arlo Guthrie (born 1947) is also a songwriter, composing "Alice's Restaurant" and starring in the 1969 film of the same name. Woody influenced many singers and songwriters, including Bob Dylan. After a long battle with Huntington's disease, Woody died in 1967 in New York City.

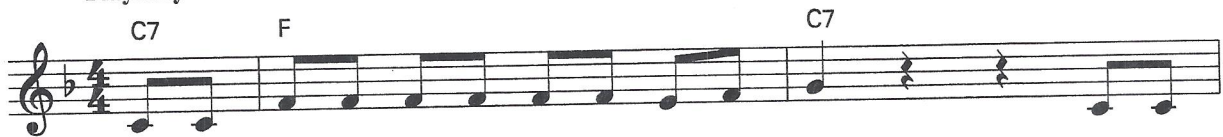


Woody Guthrie

# IF YOU'RE HAPPY

Traditional American Song

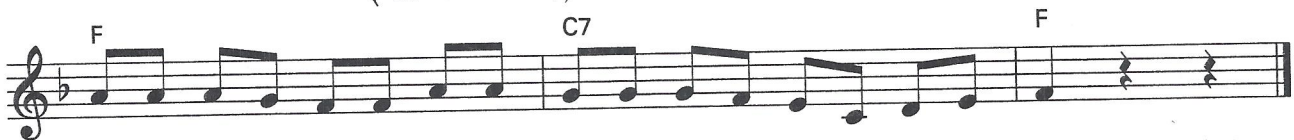
Playfully



If you're hap - py and you know it, { 1. clap your hands, } If you're  
 { 2. tap your toe, }  
 { 3. nod your head, }  
 { 4. do all three, }



hap - py and you know it, { clap your hands, } If you're hap - py and you know it, then your  
 { tap your toe, }  
 { nod your head, }  
 { do all three, }



face will sure - ly show it, If you're hap - py and you know it, { clap your hands, (clap, clap)  
 { tap your toe. (tap, tap)  
 { nod your head. (nod, nod)  
 { do all three. (at once)

Autoharp, strum N

# DOWN BY THE BAY

American Folk Song

Down by the bay, where the wa-ter-me-lons grow,  
Back to my home I dare not go, For if I

do my moth-er will say,

1. "Did you ev-er see a goose —
2. "Did you ev-er see a whale with a
3. "Did you ev-er see a fly —
4. "Did you ev-er see a bear —
5. "Did you ev-er see — lla-mas —
6. "Did you ev-er have a time when you

kiss - ing a moose,  
pol - ka dot — tail,  
wear - ing a tie,  
comb - ing his hair,  
eat - ing their pa-ja-mas,  
could-n't make a rhyme,

Down by the bay?" Down by the bay."

Piano, accompaniment pattern XVI

50x

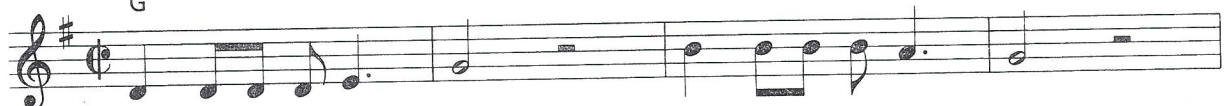
Divide into two groups and sing "Down by the Bay" as an echo song. After group 1 sings "down by the bay," group 2 begins.

# THIS LITTLE LIGHT OF MINE

African American Spiritual

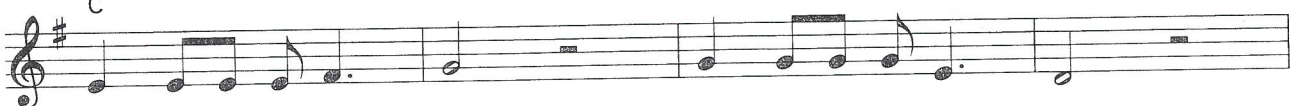
With a swing

G



1. This lit - tle light of mine, } I'm gon - na let it shine,  
2. Ev' - ry - where I go, }

C



This lit - tle light of mine, } I'm gon - na let it shine.  
Ev' - ry - where I go, }

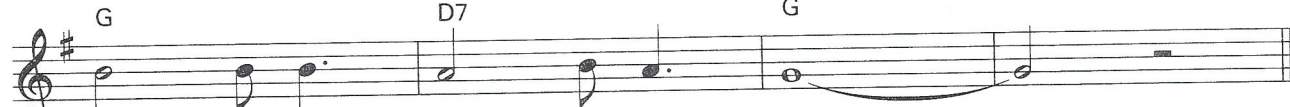
(B)



This lit - tle light of mine, } I'm gon - na let it shine, Let it  
Ev' - ry - where I go, }

(Em)

G



shine, let it shine, let it shine. \_\_\_\_\_

D7

Autoharp, strum N

Piano, accompaniment pattern XVI