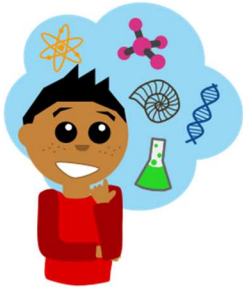


BE A SCIENTIST



Have you ever watched ice melt?

Do you know why ice melts?

I wonder if ice always takes the same amount of time to melt?



Let's do an experiment to find out!

Part 1

1. Put one ice cube in a sealed baggie or a clear plastic cup.
2. Place the baggie/cup in a **sunny** area outside.
3. Use a clock or timer to keep track of how long it takes (in minutes) to completely melt.
4. Watch the ice cube melt. To keep kids interest, have them draw what they see every few minutes or take pictures.
5. How long did it take? _____

Part 2

1. Put one ice cube in a sealed baggie or a clear plastic cup.
2. Place the baggie/cup in a **shady** area outside.
3. Use a clock or timer to keep track of how long it takes (in minutes) to completely melt.
4. Watch the ice cube melt. To keep kids interest, have them draw what they see every few minutes or take pictures.
5. How long did it take? _____

Discuss together. What makes ice melt? How did the ice melt differently in the sun and in the shade? What is shade?



GREAT JOB SCIENTIST!

